

Familiarize yourself with these park rules and regulations.

1

You are in the wildlife's home. Please respect their privacy and right of way.



Adhere to Park entry and exit times. Unless you are an overnight visitor, always exit the park before dusk. Park gates open at 6:00 am and close at 6:00 pm.

2

3 General rules of the road apply. Car hooting and driving under the influence of alcohol is strictly prohibited.



4 Move slowly and quietly but remember all animals are wild and can react dangerously if startled.

4

5

The feeding of wildlife is strictly prohibited. This upsets their diet and leads to human dependence.



6 Noise distracts the wildlife's normal daily routine. Use your mobile phones and other sound devices sparingly and in designated areas.

6

7

7 Vehicles and bikes are advised to stay on established roads and trails. Off-road driving is strictly prohibited.

8 Observe the maximum speed limit of 40kph/25mph. Speeding attracts penalties.

8

9

9 You are advised to remain in your vehicles unless at designated areas. Remember to keep your doors closed at all times.



10 View wildlife from appropriate and respectable distances. Recommended minimum distance is 20 metres.

10





WELCOME TO OUR PARKS

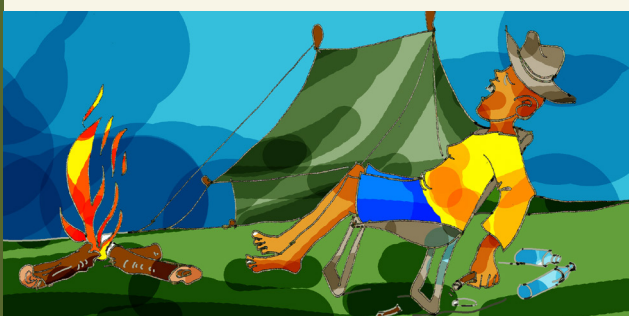
Few things, or nothing in life come close to being in the moment of the magical wilderness whether in water or on dry land. The pristine places and spaces of the wild and the mind blowing experiences will most certainly trigger the story teller in you. Come discover KWS Parks and tell the world!

KENYA
WILDLIFE
SERVICE



If you are camping, do not leave camp fires unattended.

11



12

Respect the culture, traditions and privacy of the local people of Kenya. Always seek permission before taking pictures of people and their surrounding habitats.



Pick up and carry away your own trash.

13

14

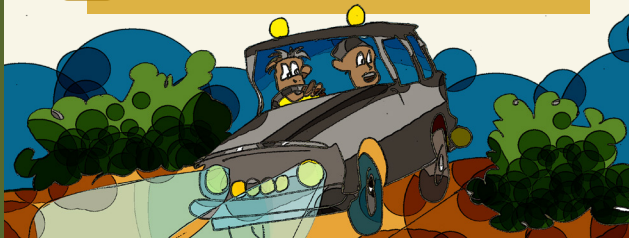
Spread the word about appropriate wildlife viewing behaviour. Teach others about the importance of not disturbing wildlife when out in the National Park.

Night game drives are allowed in select parks. Please inquire

15

16

In case of emergencies and other genuine delays, please call the hotline/Toll Free numbers for assistance and reporting.



HOTLINE NUMBERS

TSAVO EAST NATIONAL PARK

The senior warden:
P.O. Box 14, Voi
Tel: 0202080268, 0202608488
Hotline— 020 2352130
E-mail: tsavoeast@kws.go.ke

ABERDARE NATIONAL PARK

The senior Warden
P.O Box 22 – 10100 Nyeri
Hotline – Tel: 020–2046271
E-mail: aberdaresw@kws.go.ke

TSAVO WESTNATIONAL PARK

The senior warden
P.O Box 71, Mlito Andei.
Tel: 020 238 4417
Hotline +254 0720968527
E-mail tsavowestnp@kws.go.ke

NAIROBI NATIONAL PARK

The SENIOR warden:
P.O Box 47076
Tel: 020–2423423
+254–020–2587435
Email: nnp@kws.go.ke

LAKE NAKURU NATIONAL PARK

The Senior Warden:
P.O Box 539, Nakuru
Tel: 0202664071/9
Hotline: 0202313040, 0518012070
E-mail: swlakenakuru@kws.go.ke

AMBOSELI NATIONAL PARK

The Senior Warden:
P.O Box 356, loifoktok
Hotline +254 020–8029705
+254 (0202–183741)
Mobile: 0716 493 335
Email: amboselinp@kws.go.ke

TOLL FREE NUMBER

0800597000

